

Fractal Volatility Index for XOM : 0.558. Market Wide FVI:0.478
(0 - 0.33: Stable, 0.33 - 0.66: Moderate Volatility, 0.66 - 1: High Volatility)



Global Geopolitical Volatility



Red: High Risk FVI zone, Orange: Medium Risk FVI zone, Green: Low Risk FVI zone

Verv Stock Analysis Report: Exxon Mobil Corp XOM FVI 0.558

Analysis Period: 2021-04-29 to 2026-04-29

Global Geopolitical Fractal Volatility (Gold, Forex, TWI (Tariffs) and GHG Emissions)

FVI_GOLD: 0.593608 => Moderate gold volatility, likely reflecting investor caution

FVI_FX: 0.434301 => Low FX volatility; currency markets stable for now

FVI_TWI: 0.469352 => Moderate TWI volatility; minor export/import fluctuations

GHG CV: 0.223036 => Moderate emissions volatility; sector-level uncertainty exists

Primary Risk Driver: Gold volatility is a good proxy for global geopolitical risk. 0.593608.

The Fractal Volatility Index (FVI) is scaled between 0 and 1 reflecting the stock's overall volatility. A higher score indicates greater unpredictability and market instability.

Unlike traditional volatility indicators like VIX or Beta, FVI does not track short-term fluctuations—it detects hidden instability before it manifests in price swings.

FVI is a composite score that incorporates Lyapunov Exponent, Hurst Exponent, and Detrended Fluctuation Analysis (DFA).

Breakout Probability Score (BPS): -0.472

Breakout Probability Score (BPS) quantifies price momentum likelihood: BPS > 1.5 suggests high breakout potential, while BPS < 0.5 indicates consolidation.

(BPS > 1.5 High breakout potential - Strong momentum, watch for confirmation.)

(BPS 0.5 - 1.5 Moderate breakout likelihood - Possible move, monitor closely.)

(BPS < 0.5 Low breakout probability - Likely consolidation or range-bound.)

Request ID: FVI

Account ID: WeeklyReport

Fractal & Statistical Analysis

FVI Score: 0.558 (Fractal Volatility Index FVI)

DFA Result: 0.4904 (Detrended Fluctuation Analysis)

Lyapunov Exponent: 0.0167 (Measures chaos and predictability)

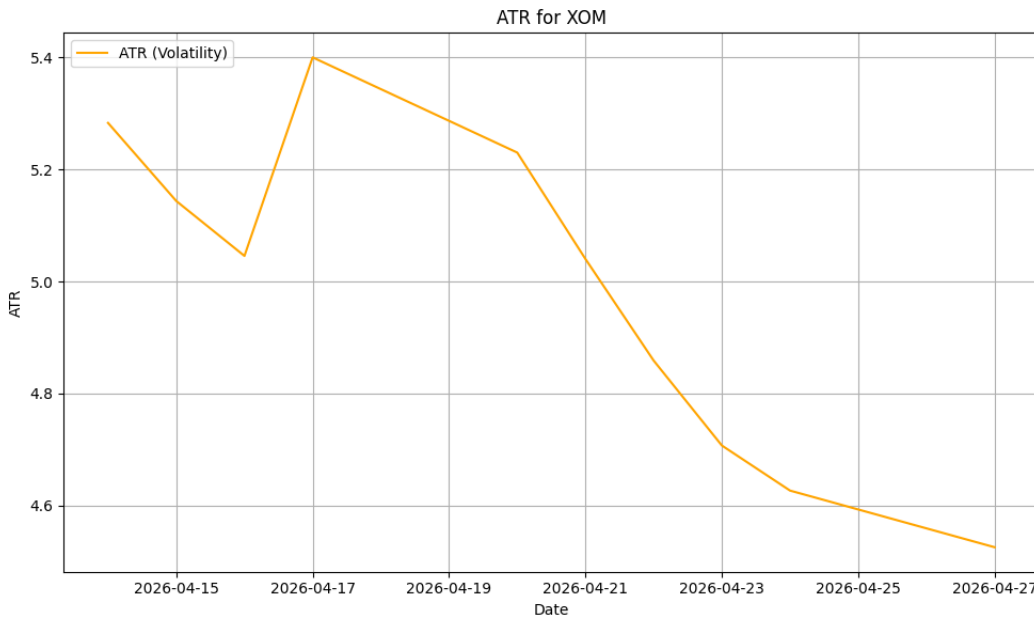
Hurst Exponent: 0.4900 (Indicates trending or mean-reverting behavior)

Breakout & Recent Price Change Analysis

Breakout Statement: No strong breakout signal detected: The latest closing price of 148.19 is within the Bollinger Bands range (140.00 - 169.62).

Latest ATR: 4.5254

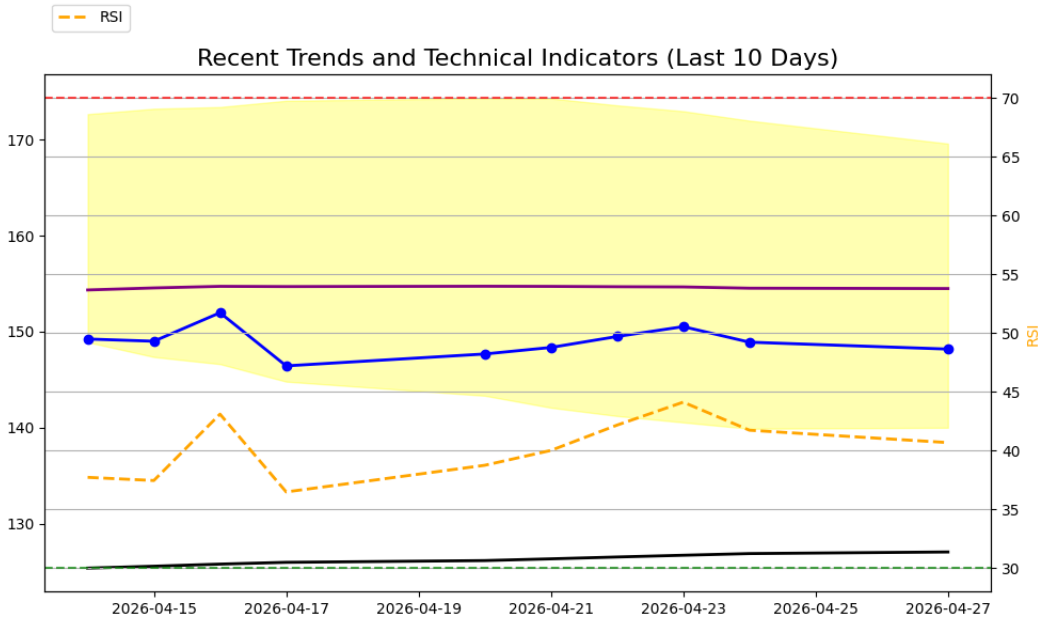
Average True Range (ATR)



The ATR measures the recent price volatility of a stock, calculating the average range between its high and low prices over a given period (usually 14 days). A higher ATR indicates greater market volatility, and a lower ATR indicates less volatility.

Low ATR (below 2): Stable stock, Moderate ATR (2-5): Mild volatility, High ATR (above 5): Highly volatile stock

Technical Indicators



Left y axis - Stock Price. Right y axis - RSI range values (30 - 70)

Close Price(blue line with circles) - Key indicator of the stock's price action and is often used to identify trends or patterns. A rising close price generally indicates an upward trend, while a falling close price shows a downward trend.

SMA_50 and SMA_200 - (purple line SMA_50, black line SMA_200) Simple Moving Averages (SMA) calculated over 50 and 200 periods. Helps identify the direction of stock price trend.

Bollinger Bands - (shaded in yellow): Bollinger Bands consists of upper, middle and lower prices. The middle line is the moving average. Price reaching the upper band can indicate an overbought condition, suggesting the stock might be due for a pullback. Price touching the lower band could indicate an oversold condition, suggesting a potential buying opportunity. When the price moves outside the bands, it may indicate extreme conditions.

Relative Strength Index RSI - (orange dotted line): The RSI is a momentum oscillator that measures the speed and change of price movements. An RSI above 70 suggests the stock is overbought and might be due for a pullback. An RSI below 30 suggests the stock is oversold and might be due for a rebound. An RSI in between indicates a more neutral market condition.

AI-Generated Market Insights

Investment Report:

--- INVESTMENT REPORT ---

1. Volatility & Breakout Potential

The XOM stock's Fractal Volatility Index (FVI) of 0.558 suggests that the stock is experiencing moderate volatility, indicating a level of uncertainty and potential risk in the market. The Lyapunov metric of 0.017, which is lower than the market-wide average, indicates a relatively stable system with less chaos. The stock's Breakout Potential Score (BPS) of -0.472 and the fact that the latest closing price is within the Bollinger Bands range suggest there is no strong breakout signal at this time. The volume change of -14.76% does not confirm the price moves, indicating a lack of investor confidence.

2. Market Sentiment

The large institutional investment of 618953245000 suggests that the stock is largely driven by institutional behavior. The moderate volatility and weak breakout signals suggest a cautious investor mood.

3. Geopolitical Risk Assessment

The stock has a moderate exposure to global stress indicators with Gold, FX, and TWI FVI at 0.594, 0.434, and 0.469 respectively. The low GHG impact score of 0.042 for the Energy sector indicates low sectoral emissions risk exposure. However, the company's high dependency on global trade and potential vulnerability to energy price shocks and supply-side inflation risks should be considered.

4. Sector and Supply Chain Exposure

As an energy company, XOM may be prone to fuel cost surges and geopolitical transport risk. Its operations in a sector with global inputs suggest some level of exposure to Asia or U.S. risk factors. The company may also be vulnerable to tariffs, shipping disruption, or climate-related regulation.

--- STRATEGY RECOMMENDATION ---

Given the current market conditions, a consolidation phase is likely for XOM. The optimal strategy would be to hedge, considering the moderate volatility, weak breakout signals, and potential geopolitical risks.

--- FINAL TAKEAWAY ---

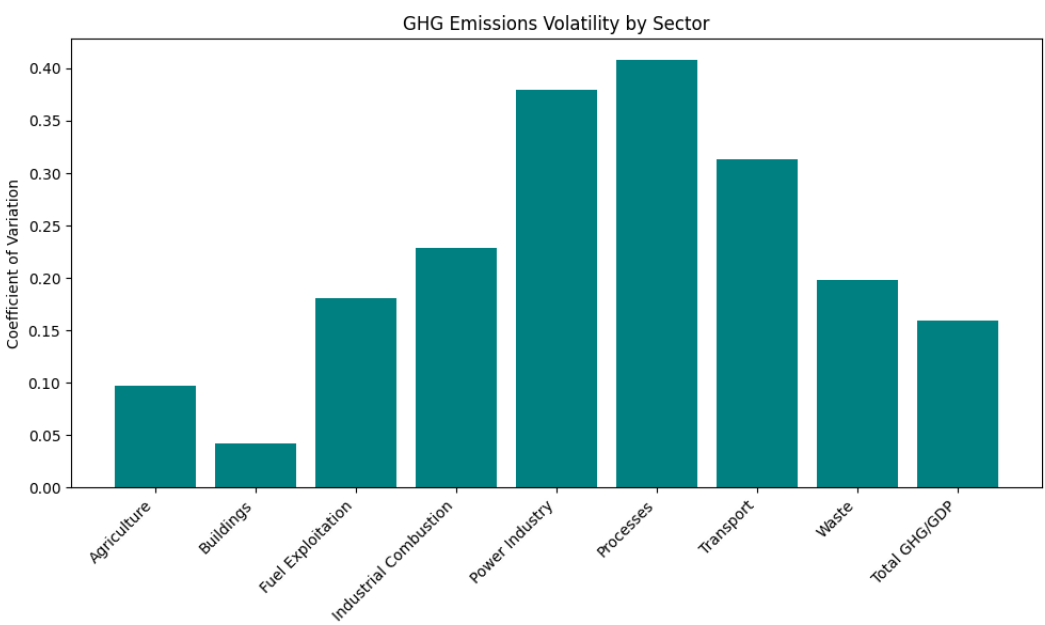
"XOM is experiencing moderate volatility and weak breakout signals amidst potential geopolitical risks—investors should position defensively."

Market Capitalization: 618953245000, Industry: OIL & GAS INTEGRATED, Latest Volume: 13940841, Description: Exxon Mobil Corp, Sector: ENERGY, Price to Book: 2.386, Trailing PE: 22.23, Forward PE: 14.62, Enterprise to Ebitda: 9.6, Enterprise to Revenue: 2.012, Profit Margins: 0.089

The trading volume has changed by -14.76% over the past week, indicating potential shifts in market sentiment. Please factor this into the volatility and risk analysis.

Beta measures stock volatility relative to the overall market: 0.29
Beta of 0.29 suggests low volatility compared to the market.

Volatility Indicators of GHG Emissions by Industry and GDP



Low GHG impact (0.042) for the Energy sector.

Disclaimer: The Fractal Volatility Index (FVI) measures structural market instability, not short-term price direction. High FVI (red dot) does not necessarily indicate a price breakout—rather, it signals unpredictable price behavior and potential structural shifts. While market instability can precede significant moves in either direction, Verv Stock Reports do not predict price trends but offer insight into underlying volatility patterns. Investors should interpret FVI alongside fundamental and technical analysis before making decisions.

Stock Market Price Credibility Report

Analysis based on current global macroeconomic and geopolitical information.

Market_Price_Credibility_Analysis:

```
{  
  "Final_Score": 0.363,  
  "Price_Volume_Divergence": 0,  
  "Volatility_Dissonance_Index": -0.108,  
  "Deception_Risk": 0.769,  
  "Trumpery_Alert": true,  
  "Summary": "Truth is on vacation. Please hold for alternate facts."  
}
```

Reasoning:

The U.S. debt and deficit levels continue to rise, creating a potential risk for the economy in the long term. The changes in U.S. Treasury bond yields and issuance, coupled with reports of declining foreign demand for U.S. bonds, indicate a possible shift in global confidence in the U.S. as a safe haven for investment.

Central bank interventions, including rate cuts and quantitative easing, have been used to stimulate the economy. However, these measures may be creating artificial conditions that could lead to a financial bubble or exacerbate a future recession.

The use of tariffs and sanctions as economic tools has added a layer of geopolitical risk to the global economy. This, along with the influence of BRICS+ and de-dollarization trends, is reshaping the global economic landscape in ways that may not be fully reflected in current market valuations.

Inflation remains relatively low despite loose monetary policy, suggesting a disconnect between official interest rate policy and actual economic conditions.

Finally, gold volatility and geopolitical hedging activities indicate a level of uncertainty and risk aversion that is not necessarily reflected in the broader market narrative. This could be a sign of underlying instability or potential market correction.

In conclusion, there appears to be a significant disconnect between the economic narrative and the underlying fiscal, monetary, and geopolitical realities. This disconnect is characterized by a high level of uncertainty, risk aversion, and potential instability.

.

Deception Risk:

Between 0 and .2, markets appear fundamentally sound, no price distortion.

Between .2 and .4 there may be some irrationality or manipulation. Caution is advised.

Between .4 and .6 there are signals of disconnect between narratives and reality.

Between .6 and .8 distortions mean possible financial gaslighting.

Between .8 and 1 signals a confidence scam - you are being sold a bridge.

What Price Credibility Sell You a Bridge Index captures:

Price to Volume Divergence PVD.' When price rises while volume drops is suspicious behavior.

A Narrative Reality Dislocation Index NRDIndex is an AI score for disconnect between corporate statements and underlying fundamentals.

A Volatility Persistence Score VPI. When volatility indicators stay low despite geopolitical/economic chaos.

The Macro Score includes Tariff Impact Denial. High tariffs plus high exposure plus rising stock. This may be a trumperry illusion alert.

Treasury Detector TFD Liquidity Masking Metric. Fed/Treasury injections may be affecting retail activity or debt spreads.

The Media Sentiment Mismatch is included. This is where news tone is contrary to actual market data (e.g. bullish despite bond collapse).

Note: Trumperry derives from a French word meaning to deceive, in many dictionaries showy but worthless.

_____ **END OF REPORT** _____