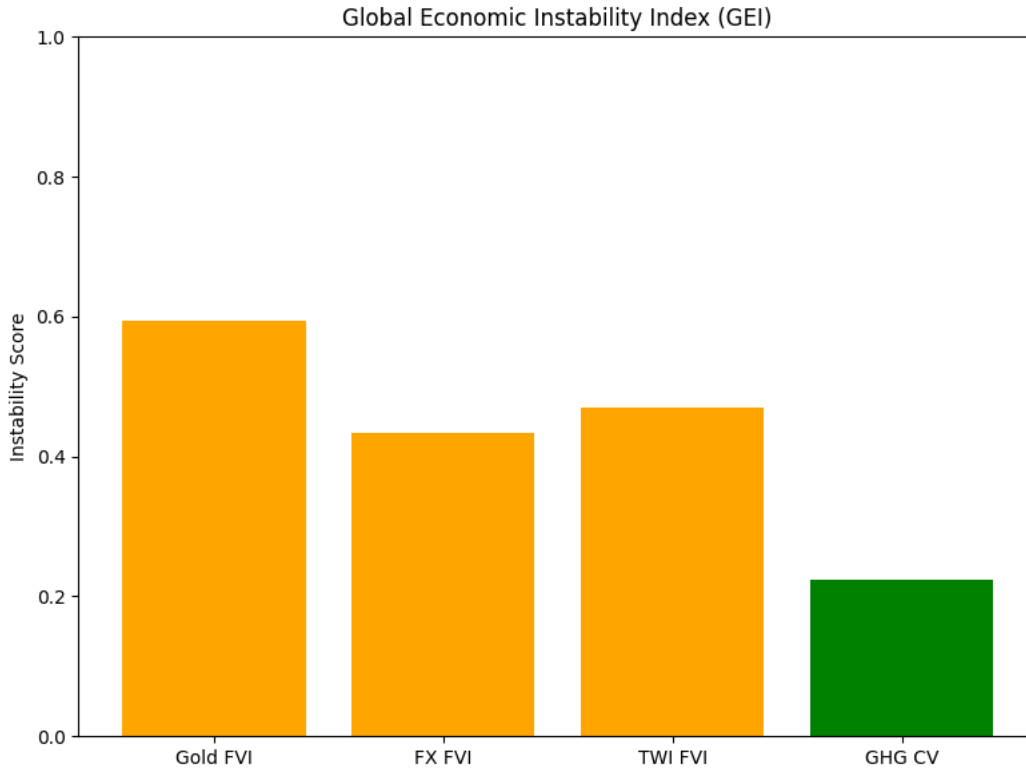


Fractal Volatility Index for WMT : 0.537. Market Wide FVI:0.478
(0 - 0.33: Stable, 0.33 - 0.66: Moderate Volatility, 0.66 - 1: High Volatility)



Global Geopolitical Volatility



Red: High Risk FVI zone, Orange: Medium Risk FVI zone, Green: Low Risk FVI zone

Verv Stock Analysis Report: Walmart Inc. WMT FVI 0.537

Analysis Period: 2021-04-29 to 2026-04-29

Global Geopolitical Fractal Volatility (Gold, Forex, TWI (Tariffs) and GHG Emissions)

FVI_GOLD: 0.593608 => Moderate gold volatility, likely reflecting investor caution
FVI_FX: 0.434301 => Low FX volatility; currency markets stable for now
FVI_TWI: 0.469352 => Moderate TWI volatility; minor export/import fluctuations
GHG CV: 0.223036 => Moderate emissions volatility; sector-level uncertainty exists
Primary Risk Driver: Gold volatility is a good proxy for global geopolitical risk. 0.593608.

The Fractal Volatility Index (FVI) is scaled between 0 and 1 reflecting the stock's overall volatility. A higher score indicates greater unpredictability and market instability.

Unlike traditional volatility indicators like VIX or Beta, FVI does not track short-term fluctuations—it detects hidden instability before it manifests in price swings.

FVI is a composite score that incorporates Lyapunov Exponent, Hurst Exponent, and Detrended Fluctuation Analysis (DFA).

Breakout Probability Score (BPS): -0.162

Breakout Probability Score (BPS) quantifies price momentum likelihood: $BPS > 1.5$ suggests high breakout potential, while $BPS < 0.5$ indicates consolidation.

($BPS > 1.5$ High breakout potential - Strong momentum, watch for confirmation.)

($BPS 0.5 - 1.5$ Moderate breakout likelihood - Possible move, monitor closely.)

($BPS < 0.5$ Low breakout probability - Likely consolidation or range-bound.)

Request ID: FVI

Account ID: WeeklyReport

Fractal & Statistical Analysis

FVI Score: 0.537 (Fractal Volatility Index FVI)

DFA Result: 0.5169 (Detrended Fluctuation Analysis)

Lyapunov Exponent: 0.0162 (Measures chaos and predictability)

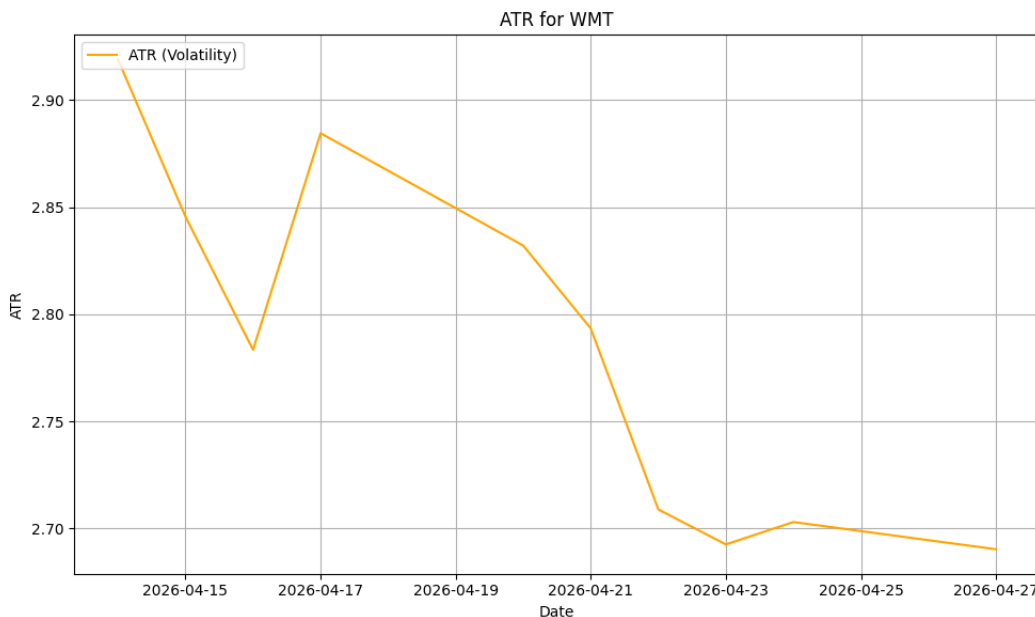
Hurst Exponent: 0.5119 (Indicates trending or mean-reverting behavior)

Breakout & Recent Price Change Analysis

Breakout Statement: No strong breakout signal detected: The latest closing price of 127.59 is within the Bollinger Bands range (121.82 - 131.63).

Latest ATR: 2.6902

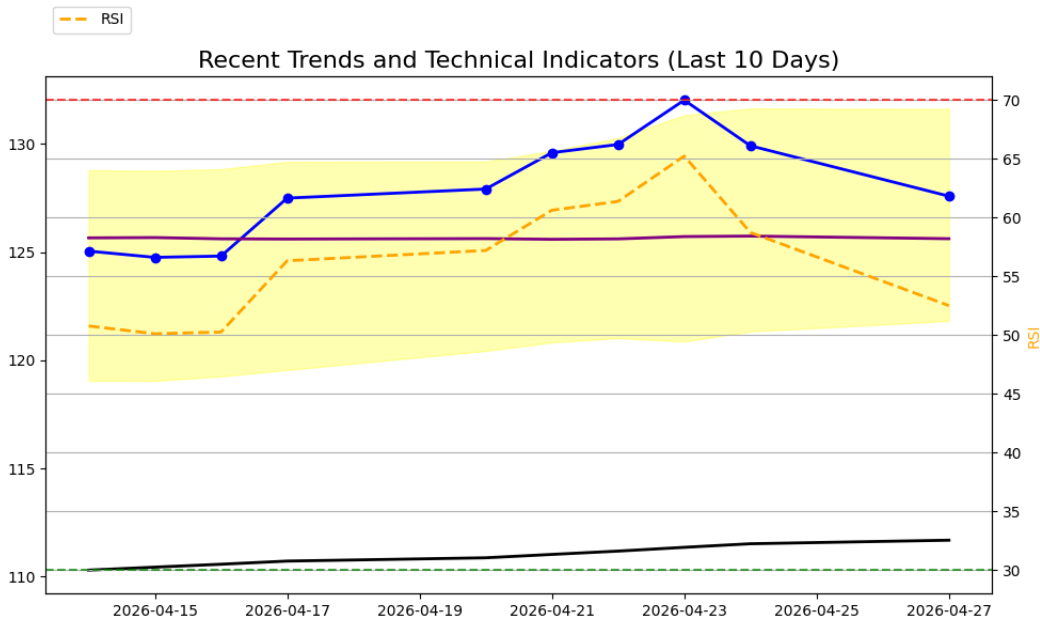
Average True Range (ATR)



The ATR measures the recent price volatility of a stock, calculating the average range between its high and low prices over a given period (usually 14 days). A higher ATR indicates greater market volatility, and a lower ATR indicates less volatility.

Low ATR (below 2): Stable stock, Moderate ATR (2-5): Mild volatility, High ATR (above 5): Highly volatile stock

Technical Indicators



Left y axis - Stock Price. Right y axis - RSI range values (30 - 70)

Close Price(blue line with circles) - Key indicator of the stock's price action and is often used to identify trends or patterns. A rising close price generally indicates an upward trend, while a falling close price shows a downward trend.

SMA_50 and SMA_200 - (purple line SMA_50, black line SMA_200) Simple Moving Averages (SMA) calculated over 50 and 200 periods. Helps identify the direction of stock price trend.

Bollinger Bands - (shaded in yellow): Bollinger Bands consists of upper, middle and lower prices. The middle line is the moving average. Price reaching the upper band can indicate an overbought condition, suggesting the stock might be due for a pullback. Price touching the lower band could indicate an oversold condition, suggesting a potential buying opportunity. When the price moves outside the bands, it may indicate extreme conditions.

Relative Strength Index RSI - (orange dotted line): The RSI is a momentum oscillator that measures the speed and change of price movements. An RSI above 70 suggests the stock is overbought and might be due for a pullback. An RSI below 30 suggests the stock is oversold and might be due for a rebound. An RSI in between indicates a more neutral market condition.

AI-Generated Market Insights

Investment Report:

--- INVESTMENT REPORT ---

1. Volatility & Breakout Potential: WMT's Fractal Volatility Index (FVI) of 0.537 suggests moderate volatility, indicating a relatively stable regime. The Lyapunov value of 0.016 indicates a lower level of systemic instability compared to the market-wide values. The Bollinger Bands are not showing significant expansion or contraction, and the volume decrease of -10.06% does not confirm recent price moves.

2. Market Sentiment: Given the large market capitalization of WMT, the behavior is largely driven by institutional investors. The lack of a strong breakout signal and the negative Breakout Potential Score (-0.162) suggest cautious market sentiment towards WMT.

3. Geopolitical Risk Assessment: The market-wide Gold FVI of 0.594 indicates increased geopolitical tension, which could impact WMT due to its global operations. However, the company's operations in the Consumer Defensive sector, which lacks a GHG score, may be less directly affected by energy price shocks and trade instability.

4. Sector and Supply Chain Exposure: WMT's operations span multiple sectors, including logistics and retail, which could be sensitive to fuel cost surges and geopolitical transport risk. However, WMT's diversified supply chain and strong bargaining power may help mitigate these risks.

Strategy Recommendation: Given the current market conditions and WMT's metrics, a defensive strategy may be optimal. The stock is in a consolidation phase with no strong breakout signals. The trend-following strategy indicated by the Hurst value of 0.512 may not be effective due to the lack of volume confirmation.

--- FINAL TAKEAWAY ---

"Amid moderate volatility and geopolitical tension, WMT shows signs of stability but lacks strong breakout signals. With cautious market sentiment and potential geopolitical risks, a defensive position is recommended."

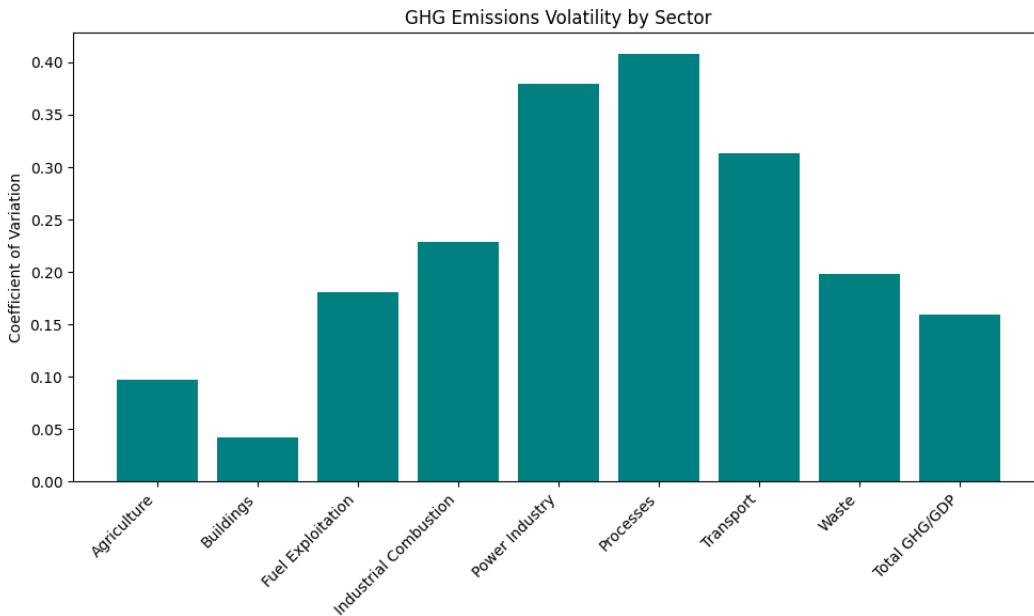
Market Capitalization: 1035591090000, Industry: DISCOUNT STORES, Latest Volume: 17029468, Description: Walmart Inc., Sector: CONSUMER DEFENSIVE, Price to Book: 10.4, Trailing PE: 47.59, Forward PE: 44.05, Enterprise to Ebitda: 23.5, Enterprise to Revenue: 1.531, Profit Margins: 0.0307

The trading volume has changed by -10.06% over the past week, indicating potential shifts in market sentiment. Please factor this into the volatility and risk analysis.

Beta measures stock volatility relative to the overall market: 0.66

Beta of 0.66 suggests low volatility compared to the market.

Volatility Indicators of GHG Emissions by Industry and GDP



No GHG score available for Consumer defensive sector.

Disclaimer: The Fractal Volatility Index (FVI) measures structural market instability, not short-term price direction. High FVI (red dot) does not necessarily indicate a price breakout—rather, it signals unpredictable price behavior and potential structural shifts. While market instability can precede significant moves in either direction, Verv Stock Reports do not predict price trends but offer insight into underlying volatility patterns. Investors should interpret FVI alongside fundamental and technical analysis before making decisions.

Stock Market Price Credibility Report

Analysis based on current global macroeconomic and geopolitical information.

Market_Price_Credibility_Analysis:

```
{  
  "Final_Score": 0.411,  
  "Price_Volume_Divergence": 0,  
  "Volatility_Dissonance_Index": 0.035,  
  "Deception_Risk": 0.808,  
  "Trumpery_Alert": true,  
  "Summary": "Trickle-down economics just trickled into your grocery bill."  
}
```

Explanation:

The NRDl is high, indicating a significant disconnect between economic narratives and underlying realities. Rising U.S. debt and deficit levels, along with changes in U.S. Treasury bond yields and issuance, point to a potentially unstable fiscal outlook. Reports of declining foreign demand for U.S. bonds also suggest a shift in global confidence in the U.S. economy.

Central bank interventions, such as rate cuts and quantitative easing, are often used as tools to stimulate the economy, but if used excessively or inappropriately, they can distort market signals and create asset bubbles. The use of tariffs and sanctions as economic tools can also lead to unintended consequences, such as trade wars and increased volatility in the global economy.

In terms of inflation vs. official interest rate policy, if inflation is rising faster than interest rates, this could indicate that monetary policy is too loose, which can lead to economic overheating and asset price bubbles.

The influence of BRICS+ and de-dollarization trends could potentially undermine the U.S. dollar's status as the world's reserve currency, which would have significant implications for the U.S. economy and global financial system.

Finally, gold volatility and geopolitical hedging can be indicators of increased risk and uncertainty in the global economy. If gold prices are rising rapidly, this could indicate that investors are seeking safe-haven assets due to fears of economic instability or geopolitical tensions.

The Trumpery Alert is set to true due to the evident manipulative and performative policymaking, such as the use of tariffs and sanctions as economic tools, and potentially inappropriate central bank interventions. The satirical summary reflects the perceived market manipulation and the disconnect between economic narratives and underlying realities.

Deception Risk:

Between 0 and .2, markets appear fundamentally sound, no price distortion.

Between .2 and .4 there may be some irrationality or manipulation. Caution is advised.

Between .4 and .6 there are signals of disconnect between narratives and reality.

Between .6 and .8 distortions mean possible financial gaslighting.

Between .8 and 1 signals a confidence scam - you are being sold a bridge.

What Price Credibility Sell You a Bridge Index captures:

Price to Volume Divergence PVD.' When price rises while volume drops is suspicious behavior.

A Narrative Reality Dislocation Index NRDIndex is an AI score for disconnect between corporate statements and underlying fundamentals.

A Volatility Persistence Score VPI. When volatility indicators stay low despite geopolitical/economic chaos.

The Macro Score includes Tariff Impact Denial. High tariffs plus high exposure plus rising stock. This may be a trumperry illusion alert.

Treasury Detector TFD Liquidity Masking Metric. Fed/Treasury injections may be affecting retail activity or debt spreads.

The Media Sentiment Mismatch is included. This is where news tone is contrary to actual market data (e.g. bullish despite bond collapse).

Note: Trumperry derives from a French word meaning to deceive, in many dictionaries showy but worthless.

_____ **END OF REPORT** _____