

Fractal Volatility Index for PLTR : 0.591. Market Wide FVI:0.478
(0 - 0.33: Stable, 0.33 - 0.66: Moderate Volatility, 0.66 - 1: High Volatility)



Global Geopolitical Volatility



Red: High Risk FVI zone, Orange: Medium Risk FVI zone, Green: Low Risk FVI zone

Verv Stock Analysis Report: Palantir Technologies Inc. PLTR FVI 0.591

Analysis Period: 2021-05-27 to 2026-05-27

Global Geopolitical Fractal Volatility (Gold, Forex, TWI (Tariffs) and GHG Emissions)

FVI_GOLD: 0.593608 => Moderate gold volatility, likely reflecting investor caution

FVI_FX: 0.434301 => Low FX volatility; currency markets stable for now

FVI_TWI: 0.469352 => Moderate TWI volatility; minor export/import fluctuations

GHG CV: 0.223036 => Moderate emissions volatility; sector-level uncertainty exists

Primary Risk Driver: Gold volatility is a good proxy for global geopolitical risk. 0.593608.

The Fractal Volatility Index (FVI) is scaled between 0 and 1 reflecting the stock's overall volatility. A higher score indicates greater unpredictability and market instability.

Unlike traditional volatility indicators like VIX or Beta, FVI does not track short-term fluctuations—it detects hidden instability before it manifests in price swings.

FVI is a composite score that incorporates Lyapunov Exponent, Hurst Exponent, and Detrended Fluctuation Analysis (DFA).

Breakout Probability Score (BPS): -1.068

Breakout Probability Score (BPS) quantifies price momentum likelihood: BPS > 1.5 suggests high breakout potential, while BPS < 0.5 indicates consolidation.

(BPS > 1.5 High breakout potential - Strong momentum, watch for confirmation.)

(BPS 0.5 - 1.5 Moderate breakout likelihood - Possible move, monitor closely.)

(BPS < 0.5 Low breakout probability - Likely consolidation or range-bound.)

Request ID: FVI

Account ID: WeeklyReport

Fractal & Statistical Analysis

FVI Score: 0.591 (Fractal Volatility Index FVI)

DFA Result: 0.5092 (Detrended Fluctuation Analysis)

Lyapunov Exponent: 0.0169 (Measures chaos and predictability)

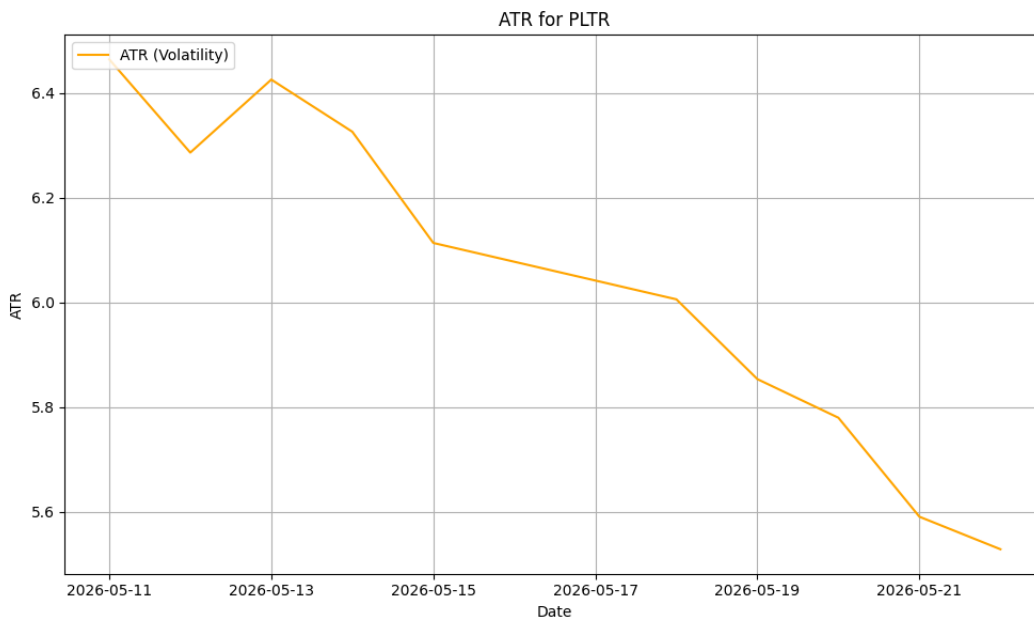
Hurst Exponent: 0.5084 (Indicates trending or mean-reverting behavior)

Breakout & Recent Price Change Analysis

Breakout Statement: No strong breakout signal detected: The latest closing price of 136.88 is within the Bollinger Bands range (130.00 - 144.85).

Latest ATR: 5.5281

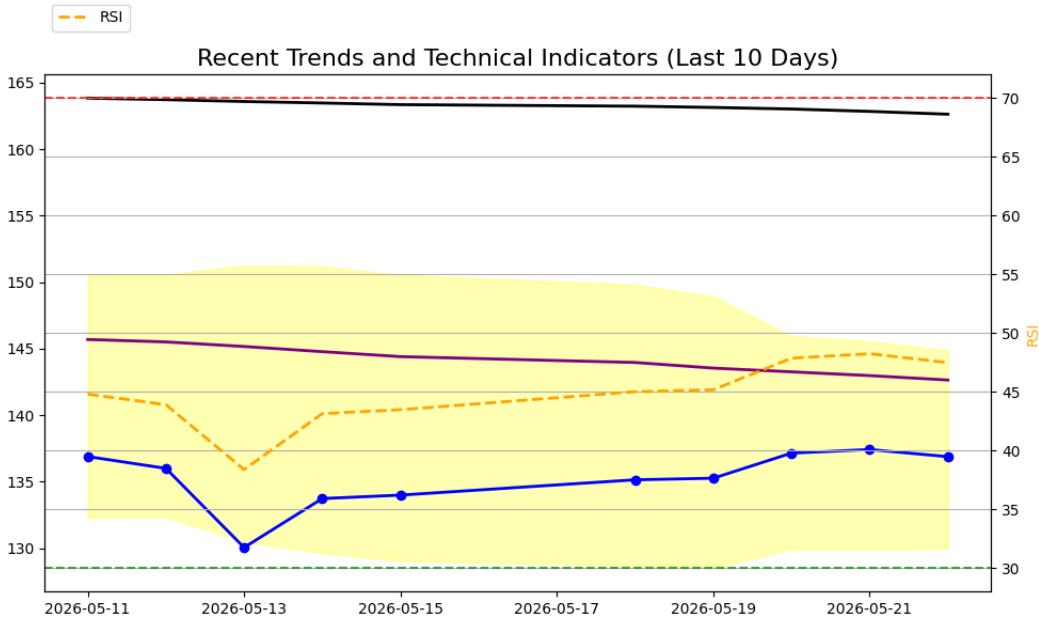
Average True Range (ATR)



The ATR measures the recent price volatility of a stock, calculating the average range between its high and low prices over a given period (usually 14 days). A higher ATR indicates greater market volatility, and a lower ATR indicates less volatility.

Low ATR (below 2): Stable stock, Moderate ATR (2-5): Mild volatility, High ATR (above 5): Highly volatile stock

Technical Indicators



Left y axis - Stock Price. Right y axis - RSI range values (30 - 70)

Close Price (blue line with circles) - Key indicator of the stock's price action and is often used to identify trends or patterns. A rising close price generally indicates an upward trend, while a falling close price shows a downward trend.

SMA_50 and SMA_200 - (purple line SMA_50, black line SMA_200) Simple Moving Averages (SMA) calculated over 50 and 200 periods. Helps identify the direction of stock price trend.

Bollinger Bands - (shaded in yellow): Bollinger Bands consists of upper, middle and lower prices. The middle line is the moving average. Price reaching the upper band can indicate an overbought condition, suggesting the stock might be due for a pullback. Price touching the lower band could indicate an oversold condition, suggesting a potential buying opportunity. When the price moves outside the bands, it may indicate extreme conditions.

Relative Strength Index RSI - (orange dotted line): The RSI is a momentum oscillator that measures the speed and change of price movements. An RSI above 70 suggests the stock is overbought and might be due for a pullback. An RSI below 30 suggests the stock is oversold and might be due for a rebound. An RSI in between indicates a more neutral market condition.

AI-Generated Market Insights

Investment Report:

--- INVESTMENT REPORT ---

1. Volatility & Breakout Potential

- PLTR is currently in a regime of stability with a moderate FVI of 0.591, suggesting more noise than acceleration.
- The Lyapunov measure of 0.017 indicates relative stability compared to market-wide values.
- The Bollinger Bands are moderately contracting, suggesting a decrease in volatility.
- The negative volume change of -15.48% does not confirm the price moves, indicating caution.

2. Market Sentiment

- The institutional behavior suggests a cautious investor mood, which is further confirmed by the volatility and breakout dynamics.

3. Geopolitical Risk Assessment

- The Gold, FX, and TWI FVI indicate a moderate level of global stress.
- The low sector sensitivity score of 0.04825 suggests limited exposure to energy, transport, and emissions volatility.
- PLTR's dependence on global supply chains is minimal, reducing its tariff exposure.

4. Sector and Supply Chain Exposure

- PLTR operates in the technology sector, which is less sensitive to global input risks.
- The company's low GHG impact score indicates limited exposure to climate-related regulation.

4. Strategy Recommendation

- The current trading phase appears to be consolidation.
- Given the lack of strong breakout signals and moderate volatility, a mean-reversion strategy is recommended.
- The BPS and FVI pattern suggest the breakout potential is fading.

--- FINAL TAKEAWAY ---

Despite the moderate volatility and lack of strong breakout signals, PLTR's stability in the face of global stress factors and limited exposure to supply chain disruptions make it a relatively safe investment. However, the negative volume change calls for caution. Therefore, a mean-reversion strategy is recommended.

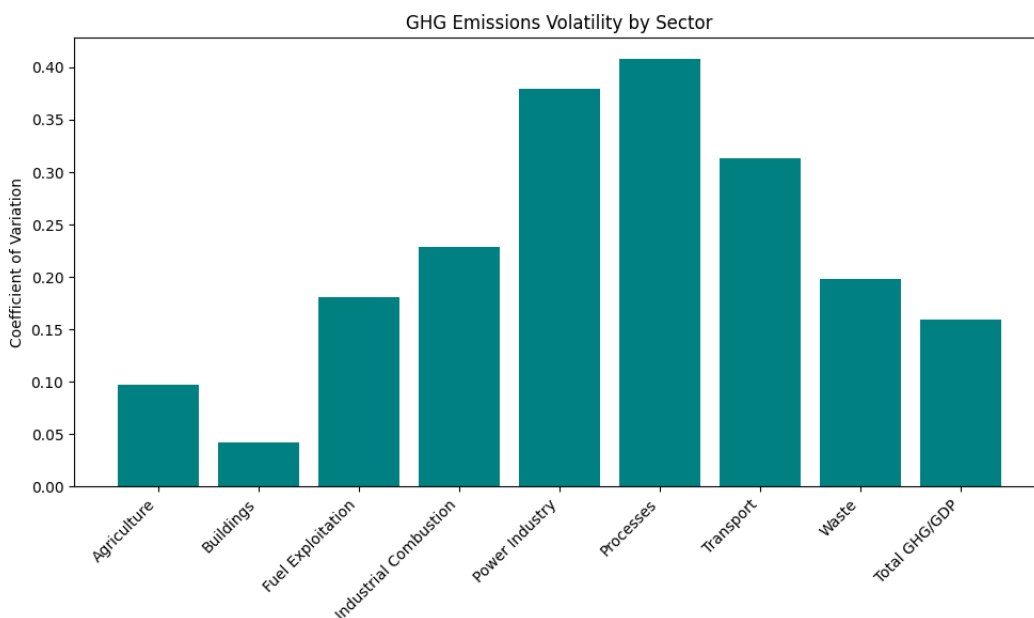
Market Capitalization: 328144093000, Industry: SOFTWARE - INFRASTRUCTURE, Latest Volume: 27578014, Description: Palantir Technologies Inc., Sector: TECHNOLOGY, Price to Book: 38.84, Trailing PE: 153.8, Forward PE: 93.46, Enterprise to Ebitda: 158.72, Enterprise to Revenue: 61.32, Profit Margins: 0.437

The trading volume has changed by -15.48% over the past week, indicating potential shifts in market sentiment. Please factor this into the volatility and risk analysis.

Beta measures stock volatility relative to the overall market: 1.52

Beta of 1.52 suggests high volatility compared to the market.

Volatility Indicators of GHG Emissions by Industry and GDP



Low GHG impact (0.048) for the Technology sector.

Disclaimer: The Fractal Volatility Index (FVI) measures structural market instability, not short-term price direction. High FVI (red dot) does not necessarily indicate a price breakout—rather, it signals unpredictable price behavior and potential structural shifts. While market instability can precede significant moves in either direction, Verv Stock Reports do not predict price trends but offer insight into underlying volatility patterns. Investors should interpret FVI alongside fundamental and technical analysis before making decisions.

Stock Market Price Credibility Report

Analysis based on current global macroeconomic and geopolitical information.

Market_Price_Credibility_Analysis:

```
{  
  "Final_Score": 0.44,  
  "Price_Volume_Divergence": 0,  
  "Volatility_Dissonance_Index": -0.013,  
  "Deception_Risk": 0.885,  
  "Trumpery_Alert": true,  
  "Summary": "Tariffs are up, rates are down, and gravity no longer applies."  
}
```

Based on the current global and U.S. financial landscape, the SYABI system has generated the following assessment:

- Rising U.S. debt and deficit levels indicate a disconnect between the narrative of fiscal responsibility and actual fiscal policy.
- Changes in U.S. Treasury bond yields and issuance, combined with reports of declining foreign demand for U.S. bonds, suggest a divergence between the narrative of U.S. debt being a safe haven and market realities.
- Central bank interventions, including rate cuts and quantitative easing, indicate a disconnect between the narrative of a strong economy and the underlying economic conditions.
- The use of tariffs and sanctions as economic tools suggests a divergence between the narrative of free trade and actual trade policy.
- Current inflation rates versus official interest rate policy indicate a disconnect between the narrative of price stability and actual monetary policy.
- The influence of BRICS+ countries and trends in de-dollarization suggest a divergence between the narrative of the U.S. dollar as the world's reserve currency and the geopolitical reality.
- Gold volatility and geopolitical hedging indicate a disconnect between the narrative of a stable global economy and the underlying geopolitical conditions.

Based on these indicators, the SYABI system has generated the following JSON response:

```
{  
  "NRDI": 0.85,  
  "Trumpery_Alert": true,  
  "Satirical_Summary": "If you believe in the narrative of a strong and stable U.S. economy, we've got a bridge to sell you."  
}
```

Deception Risk:

Between 0 and .2, markets appear fundamentally sound, no price distortion.

Between .2 and .4 there may be some irrationality or manipulation. Caution is advised.

Between .4 and .6 there are signals of disconnect between narratives and reality.

Between .6 and .8 distortions mean possible financial gaslighting.

Between .8 and 1 signals a confidence scam - you are being sold a bridge.

What Price Credibility Sell You a Bridge Index captures:

Price to Volume Divergence PVD.' When price rises while volume drops is suspicious behavior.

A Narrative Reality Dislocation Index NRDIndex is an AI score for disconnect between corporate statements and underlying fundamentals.

A Volatility Persistence Score VPI. When volatility indicators stay low despite geopolitical/economic chaos.

The Macro Score includes Tariff Impact Denial. High tariffs plus high exposure plus rising stock. This may be a trumpery illusion alert.

Treasury Detector TFD Liquidity Masking Metric. Fed/Treasury injections may be affecting retail activity or debt spreads.

The Media Sentiment Mismatch is included. This is where news tone is contrary to actual market data (e.g. bullish despite bond collapse).

Note: Trumpery derives from a French word meaning to deceive, in many dictionaries showy but worthless.

_____ **END OF REPORT** _____