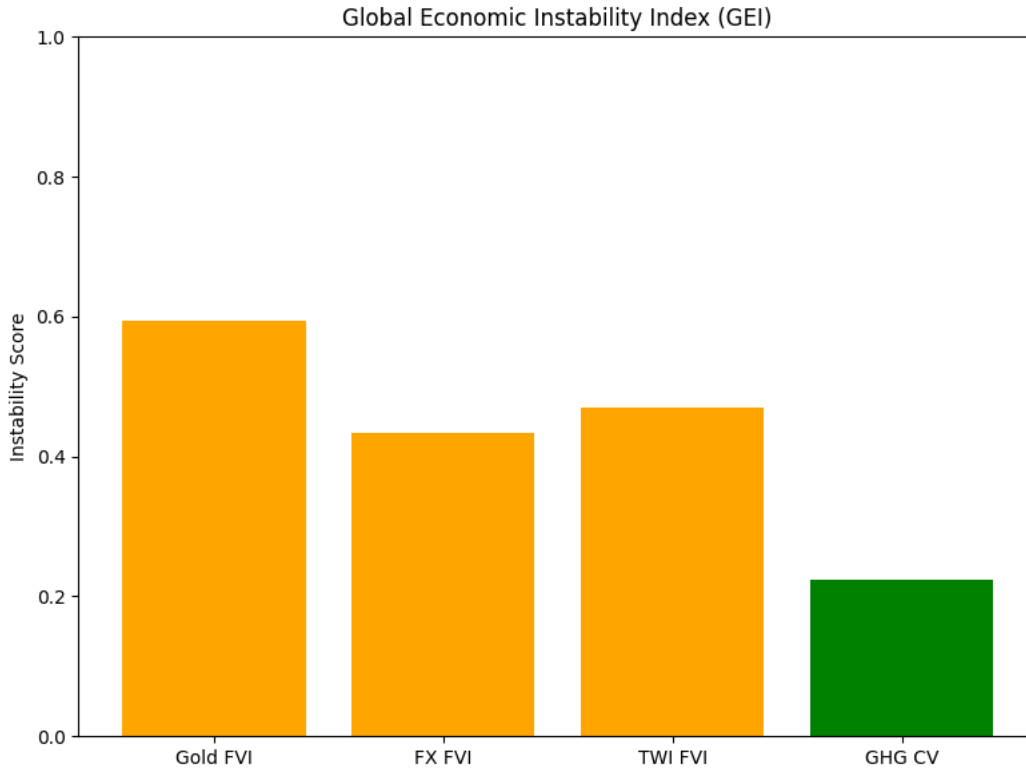


Fractal Volatility Index for PLTR : 0.566. Market Wide FVI:0.478
(0 - 0.33: Stable, 0.33 - 0.66: Moderate Volatility, 0.66 - 1: High Volatility)



Global Geopolitical Volatility



Red: High Risk FVI zone, Orange: Medium Risk FVI zone, Green: Low Risk FVI zone

Verv Stock Analysis Report: Palantir Technologies Inc. PLTR FVI 0.566

Analysis Period: 2021-04-22 to 2026-04-22

Global Geopolitical Fractal Volatility (Gold, Forex, TWI (Tariffs) and GHG Emissions)

FVI_GOLD: 0.593608 => Moderate gold volatility, likely reflecting investor caution

FVI_FX: 0.434301 => Low FX volatility; currency markets stable for now

FVI_TWI: 0.469352 => Moderate TWI volatility; minor export/import fluctuations

GHG CV: 0.223036 => Moderate emissions volatility; sector-level uncertainty exists

Primary Risk Driver: Gold volatility is a good proxy for global geopolitical risk. 0.593608.

The Fractal Volatility Index (FVI) is scaled between 0 and 1 reflecting the stock's overall volatility. A higher score indicates greater unpredictability and market instability.

Unlike traditional volatility indicators like VIX or Beta, FVI does not track short-term fluctuations—it detects hidden instability before it manifests in price swings.

FVI is a composite score that incorporates Lyapunov Exponent, Hurst Exponent, and Detrended Fluctuation Analysis (DFA).

Breakout Probability Score (BPS): -0.422

Breakout Probability Score (BPS) quantifies price momentum likelihood: BPS > 1.5 suggests high breakout potential, while BPS < 0.5 indicates consolidation.

(BPS > 1.5 High breakout potential - Strong momentum, watch for confirmation.)

(BPS 0.5 - 1.5 Moderate breakout likelihood - Possible move, monitor closely.)

(BPS < 0.5 Low breakout probability - Likely consolidation or range-bound.)

Request ID: FVI

Account ID: WeeklyReport

Fractal & Statistical Analysis

FVI Score: 0.566 (Fractal Volatility Index FVI)

DFA Result: 0.4905 (Detrended Fluctuation Analysis)

Lyapunov Exponent: 0.0167 (Measures chaos and predictability)

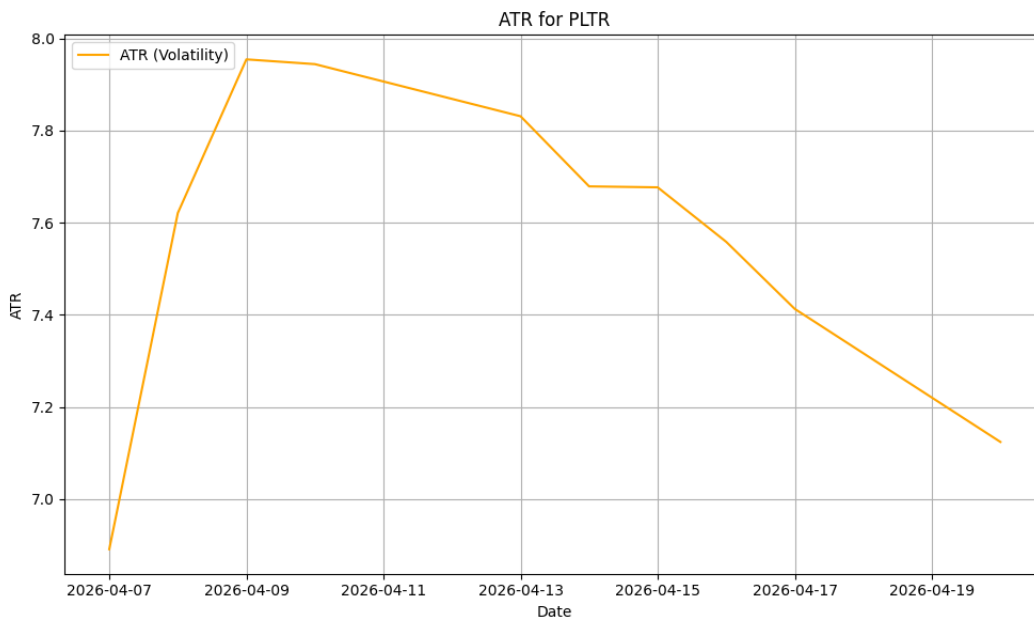
Hurst Exponent: 0.5463 (Indicates trending or mean-reverting behavior)

Breakout & Recent Price Change Analysis

Breakout Statement: No strong breakout signal detected: The latest closing price of 145.89 is within the Bollinger Bands range (127.86 - 160.40).

Latest ATR: 7.1241

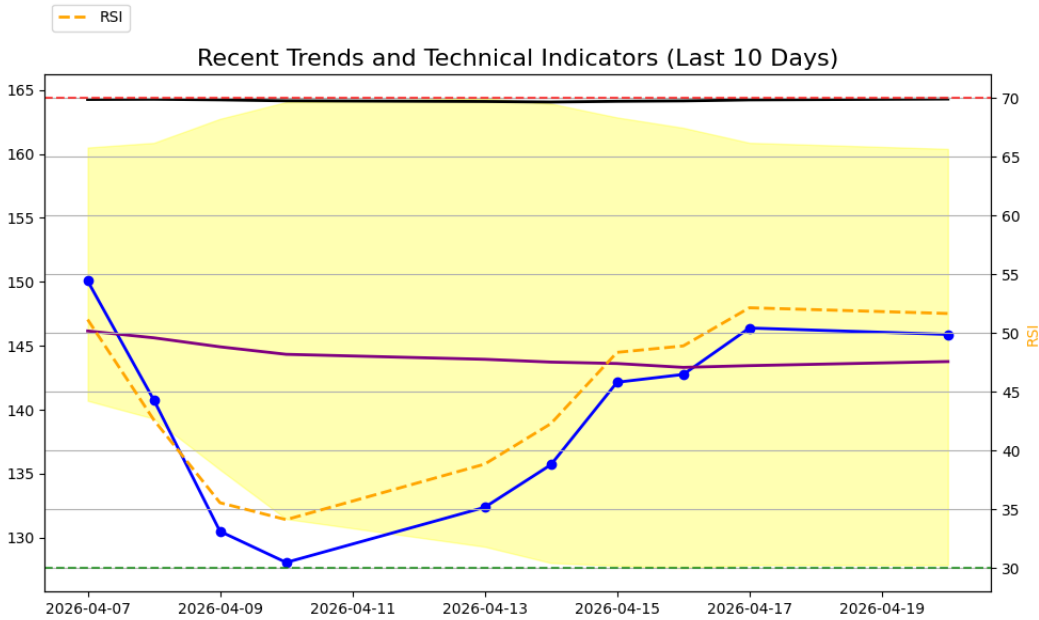
Average True Range (ATR)



The ATR measures the recent price volatility of a stock, calculating the average range between its high and low prices over a given period (usually 14 days). A higher ATR indicates greater market volatility, and a lower ATR indicates less volatility.

Low ATR (below 2): Stable stock, Moderate ATR (2-5): Mild volatility, High ATR (above 5): Highly volatile stock

Technical Indicators



Left y axis - Stock Price. Right y axis - RSI range values (30 - 70)

Close Price(blue line with circles) - Key indicator of the stock's price action and is often used to identify trends or patterns. A rising close price generally indicates an upward trend, while a falling close price shows a downward trend.

SMA_50 and SMA_200 - (purple line SMA_50, black line SMA_200) Simple Moving Averages (SMA) calculated over 50 and 200 periods. Helps identify the direction of stock price trend.

Bollinger Bands - (shaded in yellow): Bollinger Bands consists of upper, middle and lower prices. The middle line is the moving average. Price reaching the upper band can indicate an overbought condition, suggesting the stock might be due for a pullback. Price touching the lower band could indicate an oversold condition, suggesting a potential buying opportunity. When the price moves outside the bands, it may indicate extreme conditions.

Relative Strength Index RSI - (orange dotted line): The RSI is a momentum oscillator that measures the speed and change of price movements. An RSI above 70 suggests the stock is overbought and might be due for a pullback. An RSI below 30 suggests the stock is oversold and might be due for a rebound. An RSI in between indicates a more neutral market condition.

AI-Generated Market Insights

Investment Report:

--- INVESTMENT REPORT ---

1. Volatility & Breakout Potential

- PLTR shows a moderate fractal volatility index (FVI) of 0.566, indicating a relatively stable regime. However, the Lyapunov index of 0.017 suggests a low degree of system chaos and instability.
- The stock's Breakout Potential Score (BPS) of -0.422 and the absence of a strong breakout signal suggest that the stock is not poised for a significant price movement in the near term.
- The contracting Bollinger Bands and a significant decrease in volume (-49.09%) further support this view.

2. Market Sentiment

- The large volume of 348921561000 suggests that the stock's price movements are largely driven by institutional investors.
- The lack of a strong breakout signal and the negative BPS suggest a bearish market sentiment.

3. Geopolitical Risk Assessment

- The company's low GHG impact (0.048) for the Technology sector suggests a low risk of exposure to sectoral emissions regulations.
- However, the high market-wide Gold FVI (0.594) and TWI FVI (0.469) suggest a high level of geopolitical tension and global trade disruptions respectively, which may impact the company's performance.

4. Sector and Supply Chain Exposure

- As a technology company, PLTR may have exposure to Asia-sourced components, such as semiconductors. This could be a potential risk factor given the current high level of global trade disruptions indicated by the high TWI FVI.

Strategy Recommendation

- Given the current market conditions and the stock's volatility, it may be prudent to adopt a defensive strategy for PLTR. The lack of a strong breakout signal and the negative BPS suggest that the stock is not poised for a significant price movement in the near term.
- However, the moderate FVI and low Lyapunov index suggest that the stock is relatively stable and could be a good candidate for a long-term hold strategy.

--- FINAL TAKEAWAY ---

Given the current market-wide volatility regime, PLTR appears to be in a stable regime with a low risk of significant price movements in the near term. However, the high level of geopolitical tension and global trade disruptions may impact the company's performance. Therefore, a defensive position is recommended.

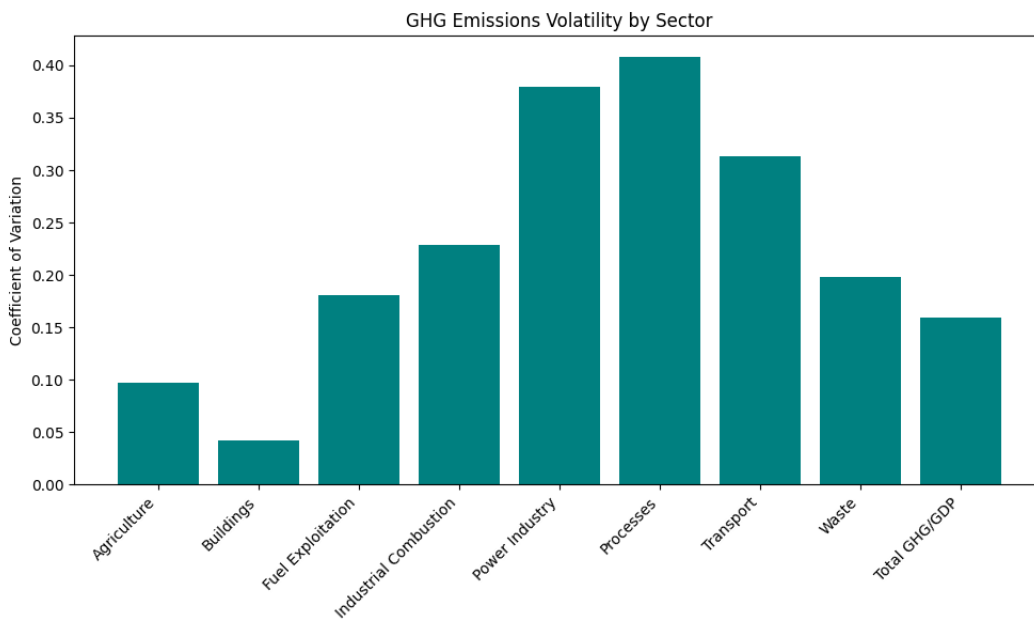
Market Capitalization: 348921561000, Industry: SOFTWARE - INFRASTRUCTURE, Latest Volume: 33482669, Description: Palantir Technologies Inc., Sector: TECHNOLOGY, Price to Book: 47.39, Trailing PE: 231.57, Forward PE: 113.64, Enterprise to Ebitda: 238.29, Enterprise to Revenue: 76.68, Profit Margins: 0.363

The trading volume has changed by -49.09% over the past week, indicating potential shifts in market sentiment. Please factor this into the volatility and risk analysis.

Beta measures stock volatility relative to the overall market: 1.67

Beta of 1.67 suggests high volatility compared to the market.

Volatility Indicators of GHG Emissions by Industry and GDP



Low GHG impact (0.048) for the Technology sector.

Disclaimer: The Fractal Volatility Index (FVI) measures structural market instability, not short-term price direction. High FVI (red dot) does not necessarily indicate a price breakout—rather, it signals unpredictable price behavior and potential structural shifts. While market instability can precede significant moves in either direction, Verv Stock Reports do not predict price trends but offer insight into underlying volatility patterns. Investors should interpret FVI alongside fundamental and technical analysis before making decisions.

Stock Market Price Credibility Report

Analysis based on current global macroeconomic and geopolitical information.

Market_Price_Credibility_Analysis:

```
{  
  "Final_Score": 0.34,  
  "Price_Volume_Divergence": 0,  
  "Volatility_Dissonance_Index": -0.224,  
  "Deception_Risk": 0.769,  
  "Trumpery_Alert": true,  
  "Summary": "Welcome to the economy where logic took early retirement."  
}
```

This assessment reflects a considerable disconnect between economic narratives and underlying realities. Rising U.S. debt and deficit levels, coupled with declining foreign demand for U.S. bonds, suggest a potentially unsustainable fiscal position. Changes in U.S. Treasury bond yields and issuance point to market uncertainty and a potential lack of confidence in the U.S. economy.

Central bank interventions, including rate cuts and quantitative easing, can be seen as attempts to stimulate economic activity. However, these actions also contribute to the disconnect by artificially influencing market dynamics. The use of tariffs and sanctions as economic tools further complicates the situation, potentially leading to trade imbalances and geopolitical tension.

The disconnect is also evident in the inflation vs. official interest rate policy. Despite relatively low inflation, interest rates remain at historically low levels, indicating that the Federal Reserve is prioritizing economic growth over inflation concerns.

The influence of BRICS+ and de-dollarization trends also contribute to the disconnect. These trends suggest a shift away from U.S. dollar dominance, which could have significant implications for the U.S. economy and global financial system.

Gold volatility and geopolitical hedging further underscore the disconnect, as these factors can lead to market instability and uncertainty.

The Trumpery Alert is set to true, indicating the presence of manipulative or performative policymaking. This is reflected in the Satirical Summary: "If you believe this is market forces, we've got a bridge to sell you." This satirical comment underscores the disconnect between economic narratives and underlying realities, suggesting that market dynamics are being influenced by factors other than pure market forces.

Deception Risk:

Between 0 and .2, markets appear fundamentally sound, no price distortion.

Between .2 and .4 there may be some irrationality or manipulation. Caution is advised.

Between .4 and .6 there are signals of disconnect between narratives and reality.

Between .6 and .8 distortions mean possible financial gaslighting.

Between .8 and 1 signals a confidence scam - you are being sold a bridge.

What Price Credibility Sell You a Bridge Index captures:

Price to Volume Divergence PVD.' When price rises while volume drops is suspicious behavior.

A Narrative Reality Dislocation Index NRDIndex is an AI score for disconnect between corporate statements and underlying fundamentals.

A Volatility Persistence Score VPI. When volatility indicators stay low despite geopolitical/economic chaos.

The Macro Score includes Tariff Impact Denial. High tariffs plus high exposure plus rising stock. This may be a trumperey illusion alert.

Treasury Detector TFD Liquidity Masking Metric. Fed/Treasury injections may be affecting retail activity or debt spreads.

The Media Sentiment Mismatch is included. This is where news tone is contrary to actual market data (e.g. bullish despite bond collapse).

Note: Trumperey derives from a French word meaning to deceive, in many dictionaries showy but worthless.

_____ **END OF REPORT** _____