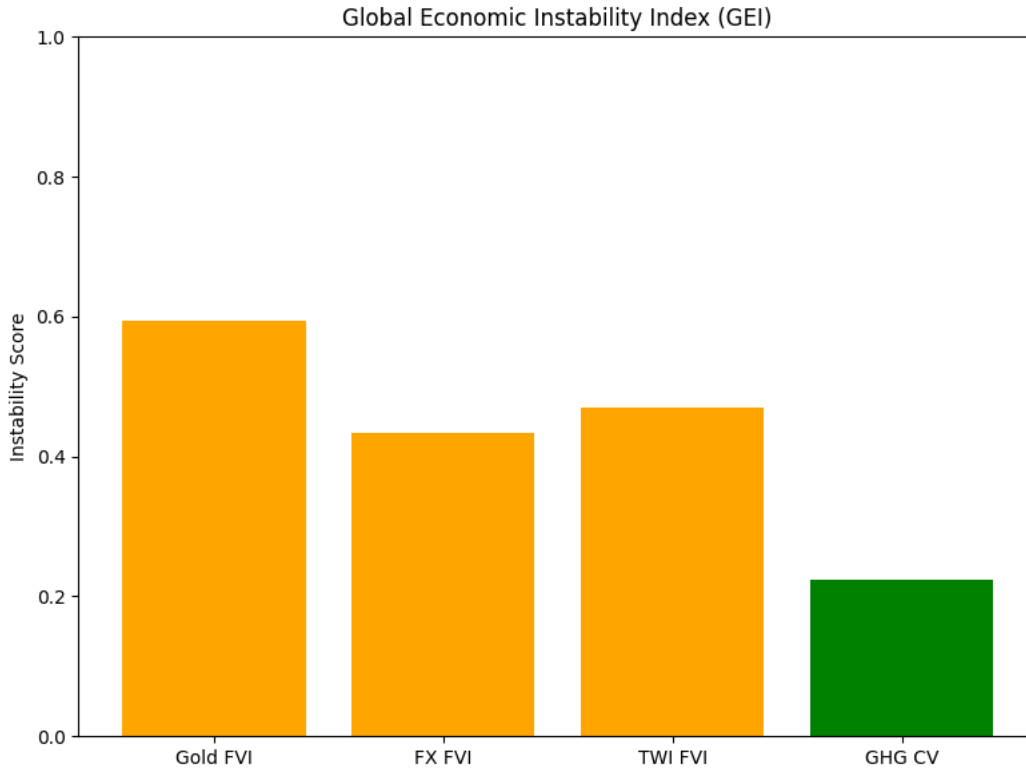


**Fractal Volatility Index for AMD : 0.608. Market Wide FVI:0.478**  
(0 - 0.33: Stable, 0.33 - 0.66: Moderate Volatility, 0.66 - 1: High Volatility)



## Global Geopolitical Volatility



Red: High Risk FVI zone, Orange: Medium Risk FVI zone, Green: Low Risk FVI zone

## Verv Stock Analysis Report: Advanced Micro Devices Inc AMD FVI 0.608

Analysis Period: 2021-04-29 to 2026-04-29

### Global Geopolitical Fractal Volatility (Gold, Forex, TWI (Tariffs) and GHG Emissions)

FVI\_GOLD: 0.593608 => Moderate gold volatility, likely reflecting investor caution

FVI\_FX: 0.434301 => Low FX volatility; currency markets stable for now

FVI\_TWI: 0.469352 => Moderate TWI volatility; minor export/import fluctuations

GHG CV: 0.223036 => Moderate emissions volatility; sector-level uncertainty exists

Primary Risk Driver: Gold volatility is a good proxy for global geopolitical risk. 0.593608.

The Fractal Volatility Index (FVI) is scaled between 0 and 1 reflecting the stock's overall volatility. A higher score indicates greater unpredictability and market instability.

Unlike traditional volatility indicators like VIX or Beta, FVI does not track short-term fluctuations—it detects hidden instability before it manifests in price swings.

FVI is a composite score that incorporates Lyapunov Exponent, Hurst Exponent, and Detrended Fluctuation Analysis (DFA).

### Breakout Probability Score (BPS): 1.598

Breakout Probability Score (BPS) quantifies price momentum likelihood: BPS > 1.5 suggests high breakout potential, while BPS < 0.5 indicates consolidation.

(BPS > 1.5 High breakout potential - Strong momentum, watch for confirmation.)

(BPS 0.5 - 1.5 Moderate breakout likelihood - Possible move, monitor closely.)

(BPS < 0.5 Low breakout probability - Likely consolidation or range-bound.)

Request ID: FVI

Account ID: WeeklyReport

### Fractal & Statistical Analysis

FVI Score: 0.608 (Fractal Volatility Index FVI)

DFA Result: 0.5170 (Detrended Fluctuation Analysis)

Lyapunov Exponent: 0.0169 (Measures chaos and predictability)

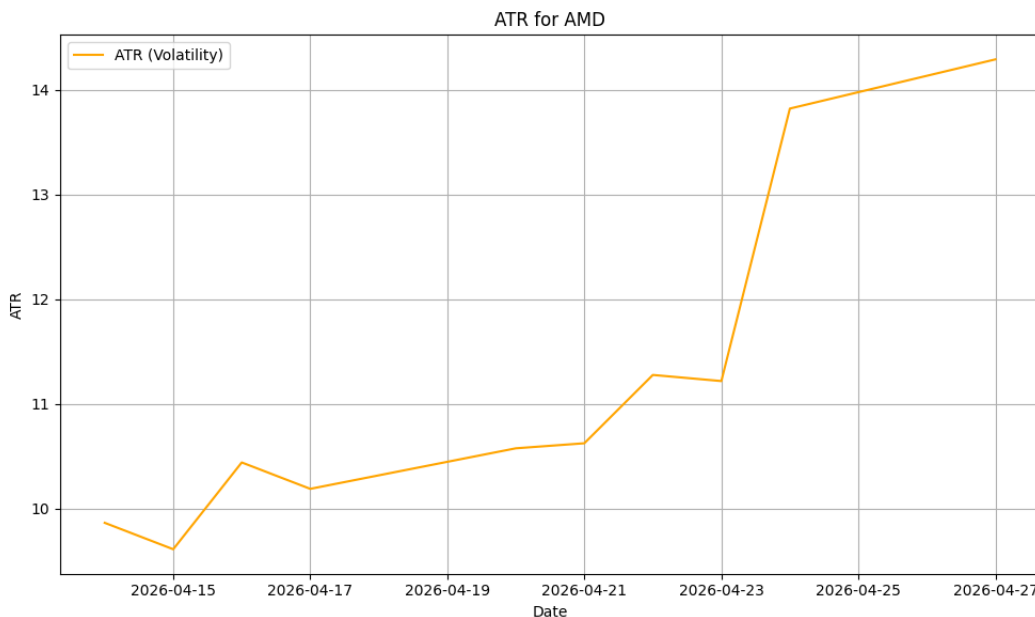
Hurst Exponent: 0.5127 (Indicates trending or mean-reverting behavior)

### Breakout & Recent Price Change Analysis

Breakout Statement: No strong breakout signal detected: The latest closing price of 334.63 is within the Bollinger Bands range (173.82 - 341.15). On a 10-day average basis, the mean closing price 292.05 is also above the mean Bollinger Upper Band 291.38, reinforcing the bullish trend.

Latest ATR: 14.2911

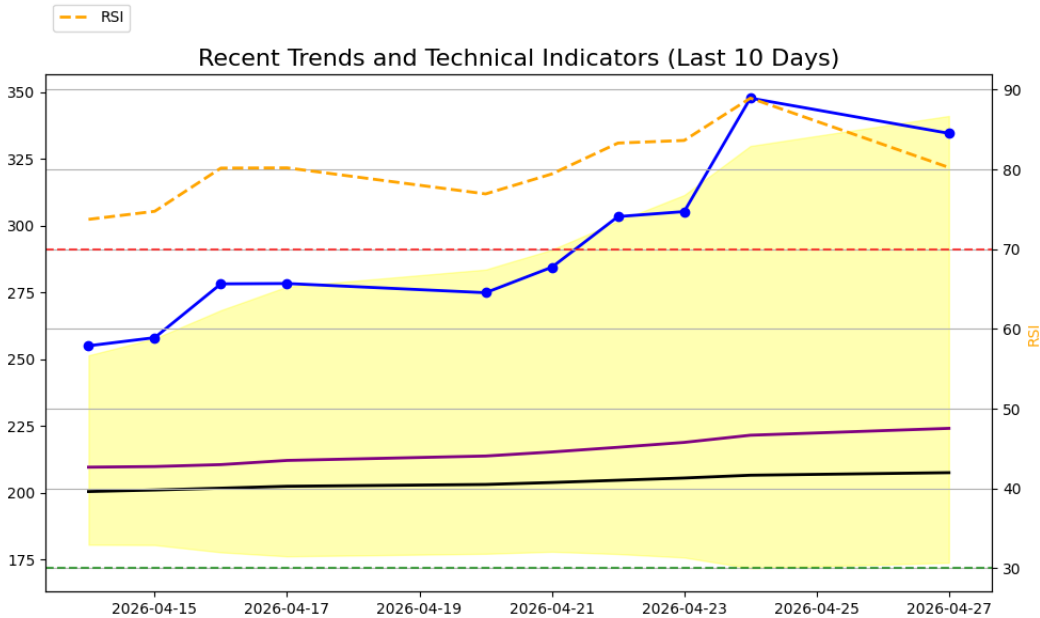
### Average True Range (ATR)



The ATR measures the recent price volatility of a stock, calculating the average range between its high and low prices over a given period (usually 14 days). A higher ATR indicates greater market volatility, and a lower ATR indicates less volatility.

Low ATR (below 2): Stable stock, Moderate ATR (2-5): Mild volatility, High ATR (above 5): Highly volatile stock

# Technical Indicators



Left y axis - Stock Price. Right y axis - RSI range values (30 - 70)

**Close Price** (blue line with circles) - Key indicator of the stock's price action and is often used to identify trends or patterns. A rising close price generally indicates an upward trend, while a falling close price shows a downward trend.

**SMA\_50 and SMA\_200** - (purple line SMA\_50, black line SMA\_200) Simple Moving Averages (SMA) calculated over 50 and 200 periods. Helps identify the direction of stock price trend.

**Bollinger Bands** - (shaded in yellow): Bollinger Bands consists of upper, middle and lower prices. The middle line is the moving average. Price reaching the upper band can indicate an overbought condition, suggesting the stock might be due for a pullback. Price touching the lower band could indicate an oversold condition, suggesting a potential buying opportunity. When the price moves outside the bands, it may indicate extreme conditions.

**Relative Strength Index RSI** - (orange dotted line): The RSI is a momentum oscillator that measures the speed and change of price movements. An RSI above 70 suggests the stock is overbought and might be due for a pullback. An RSI below 30 suggests the stock is oversold and might be due for a rebound. An RSI in between indicates a more neutral market condition.

# AI-Generated Market Insights

## Investment Report:

--- INVESTMENT REPORT ---

### 1. Volatility & Breakout Potential

- AMD's FVI of 0.608 suggests the stock is in a regime of moderate volatility, with potential for both chaos and stability. Its Lyapunov score of 0.017 is relatively low, signaling less instability compared to market-wide values.
- The stock's Bollinger Bands appear to be expanding, indicating increasing volatility, and its volume change of 45.22% confirms recent price movements.

### 2. Market Sentiment

- The high trading volume suggests institutional-driven behavior, indicating a bullish sentiment.

### 3. Geopolitical Risk Assessment

- AMD's low GHG volatility score of 0.048 suggests minimal exposure to climate-related risks. However, the high market-wide Gold FVI of 0.594 points to geopolitical tensions, which may indirectly impact the stock.
- AMD, being a tech company, might be exposed to trade disruptions due to its possible dependency on Asia-sourced components.

### 4. Sector and Supply Chain Exposure

- As part of the technology sector, AMD might be dependent on Asia-sourced components like semiconductors, making it vulnerable to disruptions in the global supply chain.
- The company's risk exposure is further compounded by the elevated TWI FVI of 0.469, indicating potential global trade disruptions.

### 4. Strategy Recommendation

- Given the current market conditions and AMD's metrics, a trend-following strategy might be the most optimal.
- The stock's BPS of 1.598 and FVI of 0.608 suggest that a breakout could be imminent, but investors should tread carefully due to the elevated market-wide volatility.

--- FINAL TAKEAWAY ---

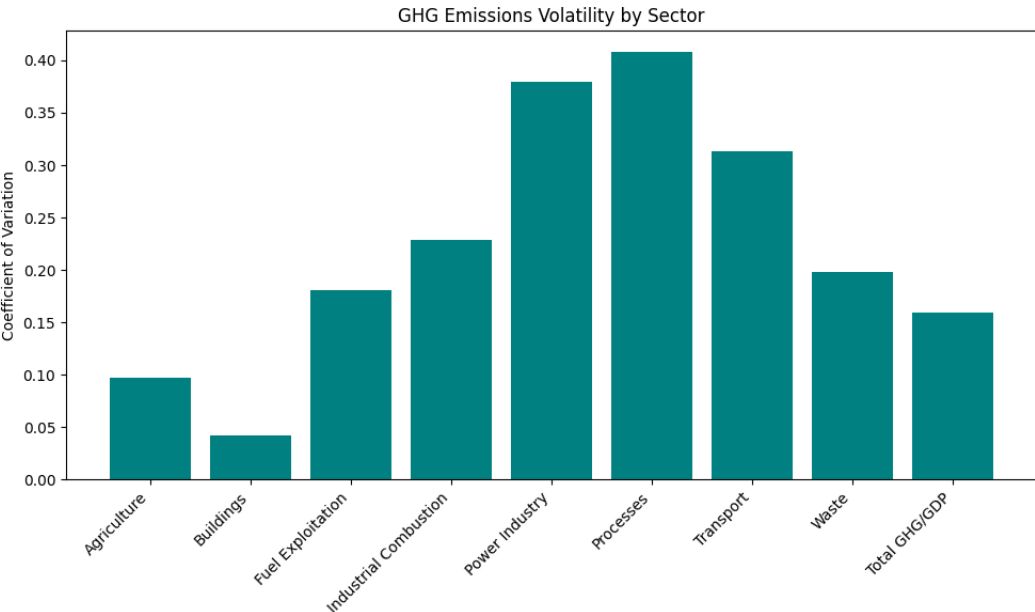
AMD is showing signs of an imminent breakout, backed by high trading volume and expanding Bollinger Bands. However, the stock's moderate FVI and the current market-wide volatility regime suggest potential risks. Investors should consider a trend-following strategy, while keeping an eye on global trade disruptions and geopolitical tensions that could impact the stock's performance.

Market Capitalization: 567056859000, Industry: SEMICONDUCTORS, Latest Volume: 50585307, Description: Advanced Micro Devices Inc, Sector: TECHNOLOGY, Price to Book: 9, Trailing PE: 133.26, Forward PE: 51.81, Enterprise to Ebitda: 77.02, Enterprise to Revenue: 16.18, Profit Margins: 0.125

The trading volume has changed by 45.22% over the past week, indicating potential shifts in market sentiment. Please factor this into the volatility and risk analysis.

Beta measures stock volatility relative to the overall market: 1.96  
Beta of 1.96 suggests high volatility compared to the market.

### Volatility Indicators of GHG Emissions by Industry and GDP



Low GHG impact (0.048) for the Technology sector.

Disclaimer: The Fractal Volatility Index (FVI) measures structural market instability, not short-term price direction. High FVI (red dot) does not necessarily indicate a price breakout—rather, it signals unpredictable price behavior and potential structural shifts. While market instability can precede significant moves in either direction, Verv Stock Reports do not predict price trends but offer insight into underlying volatility patterns. Investors should interpret FVI alongside fundamental and technical analysis before making decisions.

# Stock Market Price Credibility Report

Analysis based on current global macroeconomic and geopolitical information.

Market\_Price\_Credibility\_Analysis:

```
{  
  "Final_Score": 0.486,  
  "Price_Volume_Divergence": 0,  
  "Volatility_Dissonance_Index": 0.314,  
  "Deception_Risk": 0.846,  
  "Trumpery_Alert": true,  
  "Summary": "If you believe this rally, we've got beachfront property on the moon."  
}
```

Given the current state of the U.S. and global economy, there appears to be a significant disconnect between economic narratives and underlying fiscal, monetary, and geopolitical realities.

The rising U.S. debt and deficit levels are a concern, especially in light of the changing landscape of U.S. Treasury bond yields and issuance. There have been reports of declining foreign demand for U.S. bonds, which could potentially lead to higher interest rates and increased borrowing costs for the U.S. government.

Central bank interventions, such as rate cuts and quantitative easing, are having an impact on the economy, but it's unclear whether these measures are truly effective or simply delaying an inevitable downturn. The use of tariffs and sanctions as economic tools is also a contentious issue, as these measures can have unintended consequences and may not always achieve their intended objectives.

Inflation versus official interest rate policy is another area where there seems to be a disconnect. Despite low inflation, the Federal Reserve has been raising interest rates, which could potentially slow economic growth.

The influence of BRICS+ and de-dollarization trends are also a concern, as they could potentially undermine the U.S. dollar's status as the world's reserve currency. Finally, gold volatility and geopolitical hedging are indicators of uncertainty and risk in the global economy.

Given these factors, the following JSON response is provided:

```
{  
  "NRDI": 0.8,  
  "Trumpery_Alert": true,  
  "Satirical_Summary": "If you believe this is market forces, we've got a bridge to sell you."  
}
```

.

## Deception Risk:

Between 0 and .2, markets appear fundamentally sound, no price distortion.

Between .2 and .4 there may be some irrationality or manipulation. Caution is advised.

Between .4 and .6 there are signals of disconnect between narratives and reality.

Between .6 and .8 distortions mean possible financial gaslighting.

Between .8 and 1 signals a confidence scam - you are being sold a bridge.

## What Price Credibility Sell You a Bridge Index captures:

Price to Volume Divergence PVD.' When price rises while volume drops is suspicious behavior.

A Narrative Reality Dislocation Index NRDIndex is an AI score for disconnect between corporate statements and underlying fundamentals.

A Volatility Persistence Score VPI. When volatility indicators stay low despite geopolitical/economic chaos.

The Macro Score includes Tariff Impact Denial. High tariffs plus high exposure plus rising stock. This may be a trumpery illusion alert.

Treasury Detector TFD Liquidity Masking Metric. Fed/Treasury injections may be affecting retail activity or debt spreads.

The Media Sentiment Mismatch is included. This is where news tone is contrary to actual market data (e.g. bullish despite bond collapse).

Note: Trumpery derives from a French word meaning to deceive, in many dictionaries showy but worthless.

\_\_\_\_\_ **END OF REPORT** \_\_\_\_\_